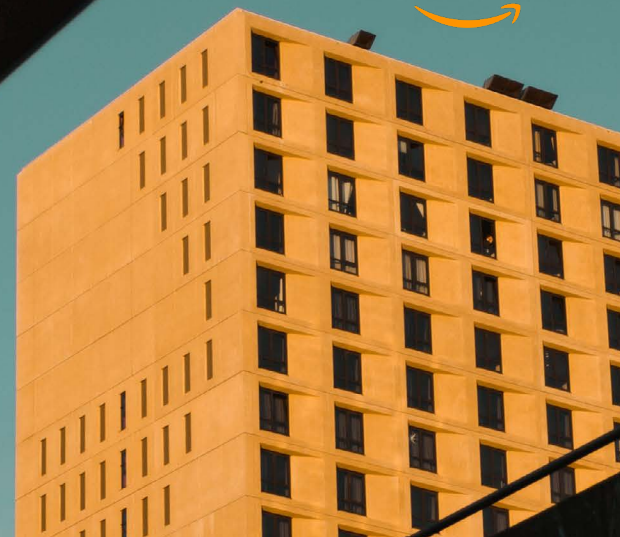




NEXT-GENERATION

# Desktop as a Service (DaaS) Solution

*Architecture, Engineering and Construction Industry*



## Abstract the infrastructure. Focus on your Business.

Few industries have felt the effects of the remote work shift more acutely than the Architecture, Engineering and Construction (AEC) sector, with its complex projects and vast ecosystem of civil engineers, architects, builders, designers and sub-contractors contributing at different stages of a project.

As hybrid work is set to become a new normal, AEC companies are rethinking their approach to technology and looking for the best way to reduce latency and improve performance, provide fast access to collaborate on digital content, and secure that content from capture to delivery.

To resolve all of these challenges, your business may be deploying and integrating multiple solutions, which only increases costs and complexity, slowing you down even further.

Tehama's all-in-one platform takes secure desktop virtualization to the next level – greatly improving security, productivity and performance so your team can meet critical project deadlines. With Tehama, enterprises can instantly create cloud-based virtual offices, collaboration rooms, and virtual desktops anywhere in the world. We consolidate all the necessary technology and tools you need to permit remote workers to access corporate infrastructure in a single platform that is easy to use, secure and compliant.

Tehama delivers exceptional performance – driving a superior user experience. With drastically reduced downtime and zero lag, we transform every remote worker's device into a high-performance workstation, regardless of their location or network connection.

### KEY TEHAMA FEATURES

Secure, cloud-based, collaborative workspaces for Site to Design Studio

Zero-trust access controls

Role-based access

Dynamic firewall rules

DLP Enabled Collaboration

Optimize workflow from Architecture to construction site

Fully integrate with industry design tools and applications

### KEY TEHAMA BENEFITS

Securely manage all content from capture to delivery

BYOD and quickly connect anywhere, anytime

Support high-performance computing-related activities with GPU Desktops

Track every content interaction with forensic auditing capabilities

Enable frictionless collaboration

## Support Any Workload With Improved Speed And Performance

Tehama offers a number of desktop configurations to meet the various workload needs of the industry. Choose from Windows or Linux desktops, for standard office use or the graphics-heavy computing needed for 3d applications in the cloud, and other high-design activities. Tehama uses Teradici's PCoIP technology which supports advanced design applications for the best in lossless text, color accuracy, and interactivity.

## Collaborate On Content Securely With Strong Identity Control

The platform implements a Zero-Trust access model for all employees and third-party vendors, protecting sensitive assets with segmented network access, dynamic firewall rules, multi-factor authentication and secrets vault. While most AEC companies have to layer on multiple security solutions to keep digital content safe, Tehama's solution is built with all of these security controls. As AEC is leveraging data science, the Tehama room helps with "Data gravity" surrounding contracting and upgrades. Tehama has made Omniverse a first-class application on Tehama and part of the Tehama workflow to provide access to NVIDIA Omniverse users.

## Monitor Threats With Forensic Auditing

Comprehensive security and compliance functions are built right into the core of the Tehama offering – eliminating the need for layering on multiple solutions. Unlike more vulnerable VDI and traditional DaaS solutions, the Tehama platform limits exposure to cyber security threats by keeping proprietary and other sensitive data highly secure with strong identity control, access management and collaboration enabled within a Tehama WorkRoom. It also takes the heavy lifting out of compliance – enabling you to keep track of everyone who interacts with an asset and making it easy to obtain detailed audit logs. This level of visibility allows auditors and risk managers to ensure all your compliance requirements are met.

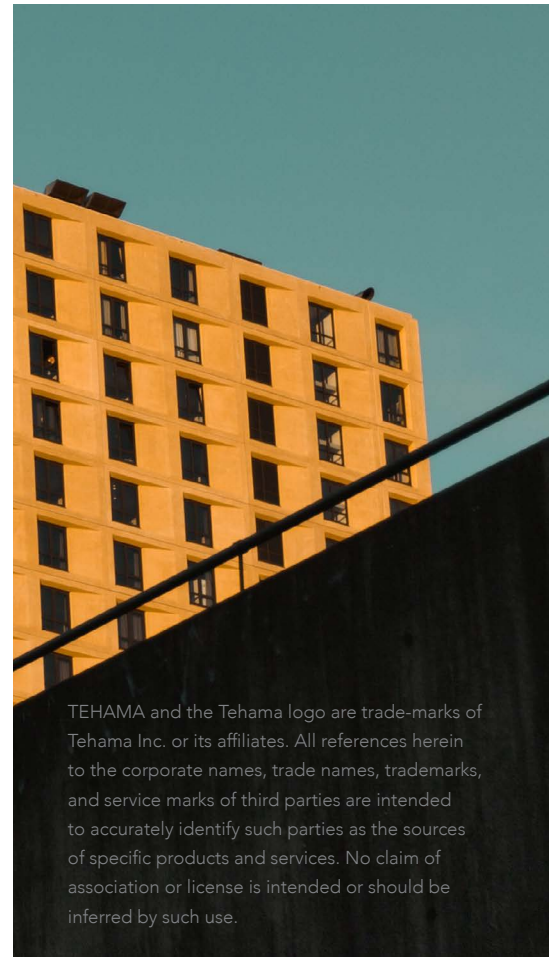
## Simplify IT Management And Reduce Costs

Tehama manages the infrastructure and updates, saving your team the time and money it takes to maintain physical desktops and on-premises infrastructure, or ship expensive hardware. Reduce costs with on-demand desktop provisioning that you can easily scale up and down depending on where you are in the content development process.

### About Tehama

Tehama is the fastest, easiest, most secure way to deploy a hybrid workforce. With the Tehama platform, enterprises can create cloud-based virtual offices, rooms, and desktops anywhere in the world. No other solution on the market today connects remote workers with mission-critical and data-sensitive systems, with the speed, agility, and unparalleled security that Tehama offers.

[Get a Demo](#)



TEHAMA and the Tehama logo are trade-marks of Tehama Inc. or its affiliates. All references herein to the corporate names, trade names, trademarks, and service marks of third parties are intended to accurately identify such parties as the sources of specific products and services. No claim of association or license is intended or should be inferred by such use.

